

# Operating Instruction

MEW01652

Revision -

## ***OPC512 G3 V2.0.x for Web-server II, 1598***

Author: Rutger Pålsson	Date of issue: 2013-05-21	Date of rev:
------------------------	---------------------------	--------------

This page has deliberately been left blank.

## Table of contents

---

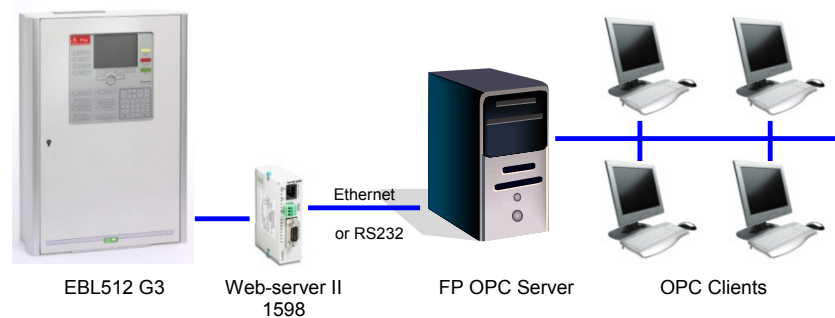
<b>1</b>	<b>Introduction</b>	<b>2</b>
<b>2</b>	<b>Configuration of Web-server II 1598</b>	<b>3</b>
<b>3</b>	<b>Configuration of FP OPC Server</b>	<b>6</b>
<b>4</b>	<b>Revision history</b>	<b>9</b>

# 1 Introduction

---

The OPC (**O**penness, **P**roductivity & **C**ollaboration<sup>1</sup>) in System 512 G3 will consist of three major parts:

- EBL512 G3 fire alarm system
- Web-server II 1598
- FP OPC Server.



The FP OPC Server is a Panasonic software that runs on a PC or a server. The Web-server II 1598 (with software OPC512 G3) is a gateway between the fire alarm system and the FP OPC Server. The OPC clients are communicating with the FP OPC Server via an interface described in this document.

The Web-server II 1598 can communicate with the FP OPC Server via either a serial port or via TCP/IP over Ethernet.

The configuration and download of the OPC512 G3 software to the Web-server II 1598 is made via the Windows program OPC512 G3 Config Tool.

This document describes the procedure of how to do the configuration and download of the software OPC512 G3 V2.0.x to the Web-server II 1598.

The document also describes how to configure the FP OPC Server to communicate properly with the Web-server II 1598.

---

<sup>1</sup> Originally OPC stood for OLE for Process Control.

---

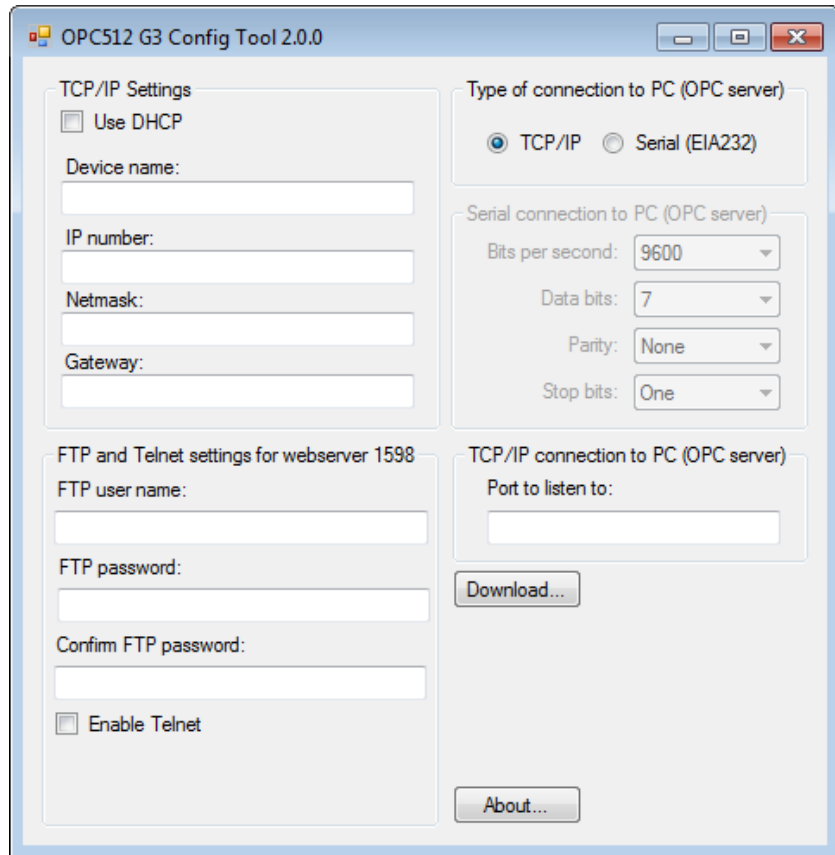
## 2 Configuration of Web-server II 1598

---

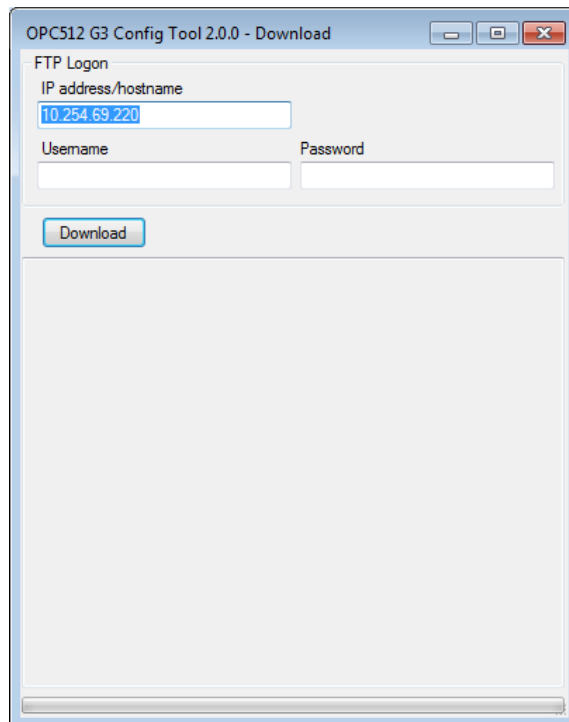
The following properties has to be defined for the Web-server II 1598.

- TCP/IP configuration.
  - IP number
  - Netmask
  - Gateway
- FTP settings.
  - FTP user name (default is 'ftp')
  - FTP password (default is also 'ftp')
- Telnet enabled or not. If enabled user/pwd is 'tel'/'tel'. There is no reason to have this enabled in normal circumstances, but it could be useful if one has to troubleshoot the setup.
- Type of connection to the PC with the FP OPC server. We support connection via either TCP/IP, or via the 2<sup>nd</sup> RS232 (modem com) port on the Web-server II 1598.
  - For TCP/IP a port has to be entered, and together with the Web-server II 1598 IP nr, this defines the way for the FP OPC server to connect to Web-server II 1598. It is recommended to avoid well known service ports, for example port 80 (the HTTP protocol).
  - For the serial connecton one must select transmission speed (bits per second), parity, byte size (Data bits) and stop bits. The same settings should ofcourse be set in the FP OPC server.

When started, the OPC512 G3 Config Tool show its' main window.



To download the above settings, as well as the application software to a webserver, click the button 'Download...' to bring up the download dialog.



The IP address and ftp username/password that should be entered here, are those that the Web-server II 1598 *currently has*, as opposed

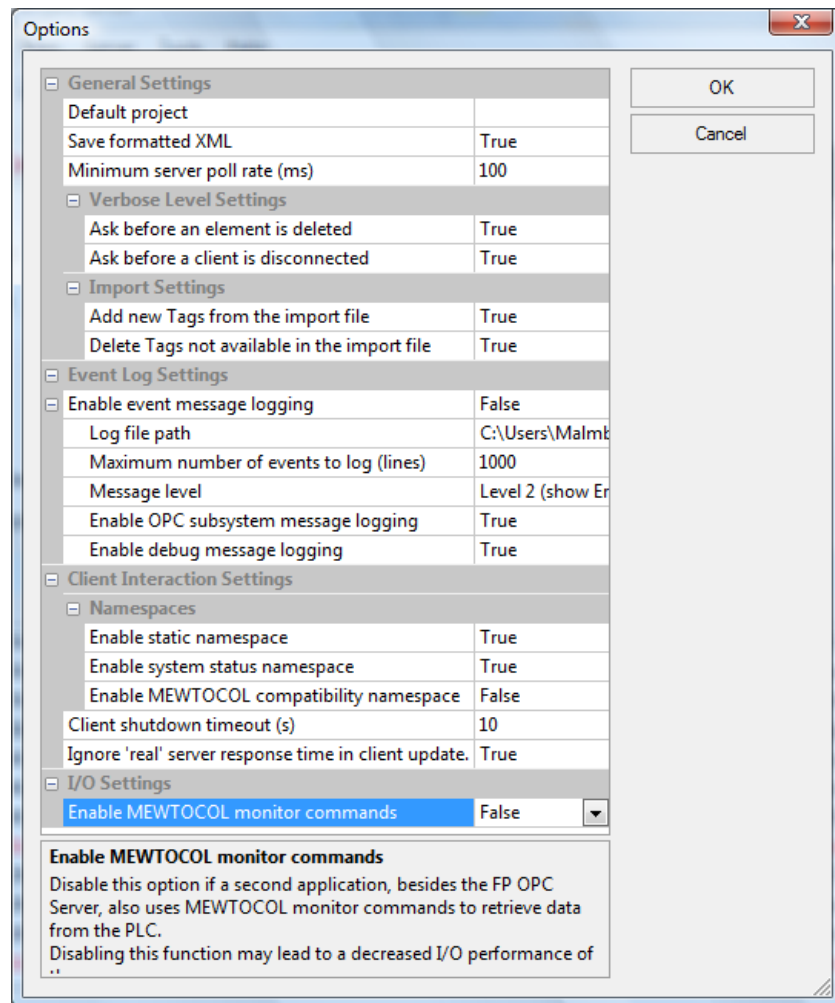
to those explained above which is the settings the webserver will have *after download and restart*.

After download the Web-server II 1598 should be reset by power down / power up.

### 3 Configuration of FP OPC Server

This section describes the settings that are required in the FP OPC Server. For more information about these settings see the help for the FP OPC Server.

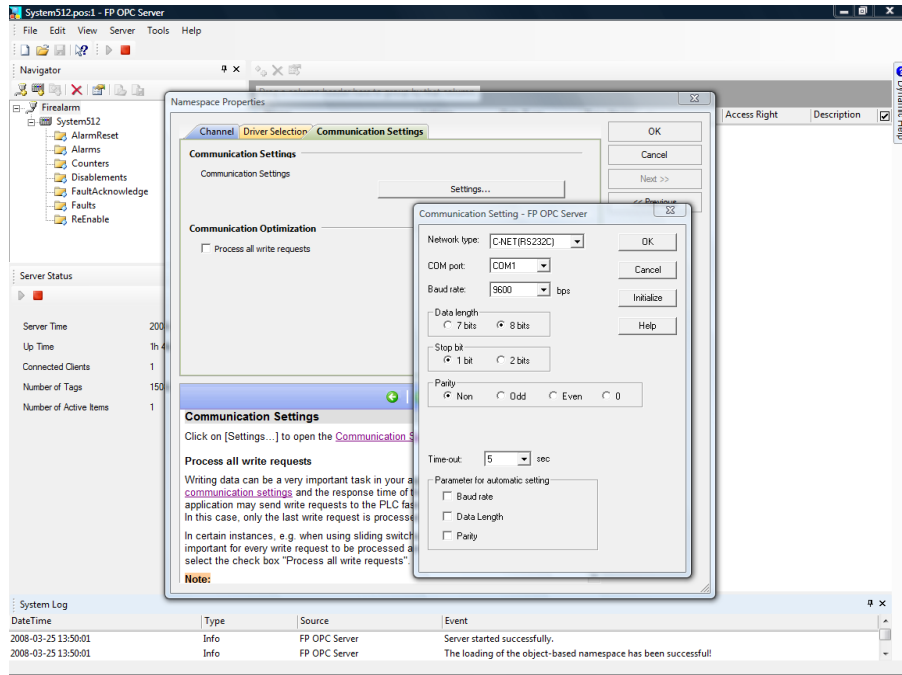
The first thing to do after the FP OPC Server has been installed is to disable FP OPC Server monitoring via Tools|Options.



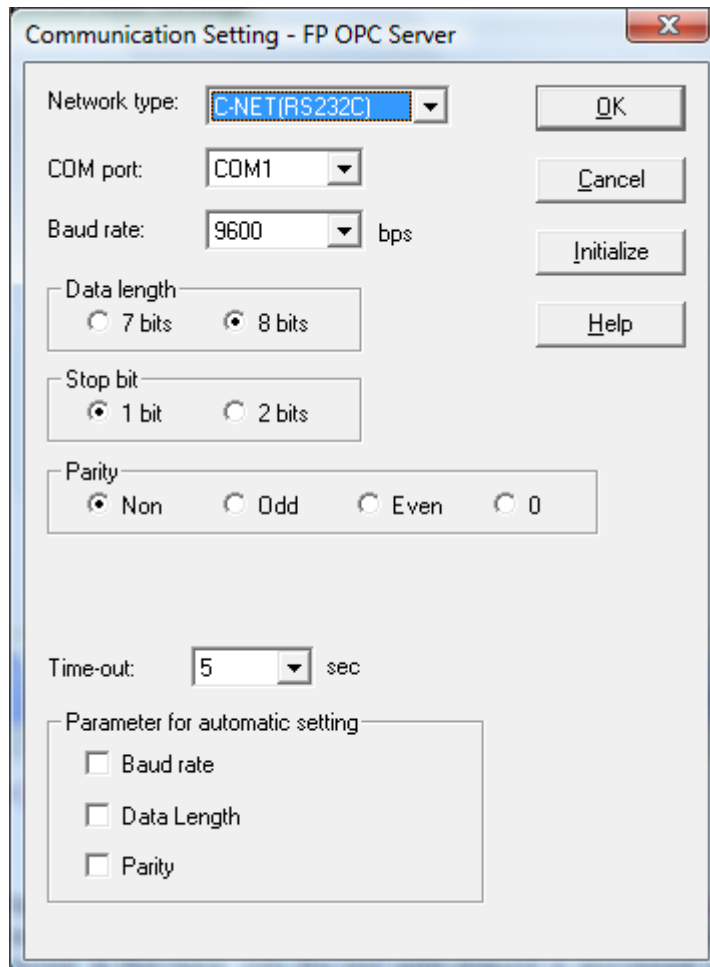
Make sure the 'Enable MEWTOCOL monitor commands' setting is set to False.

The next thing is to configure the communication settings. The dialog for communication settings is displayed by right-clicking the channel, select properties and click the 'Settings' button in the tab page for communication settings.

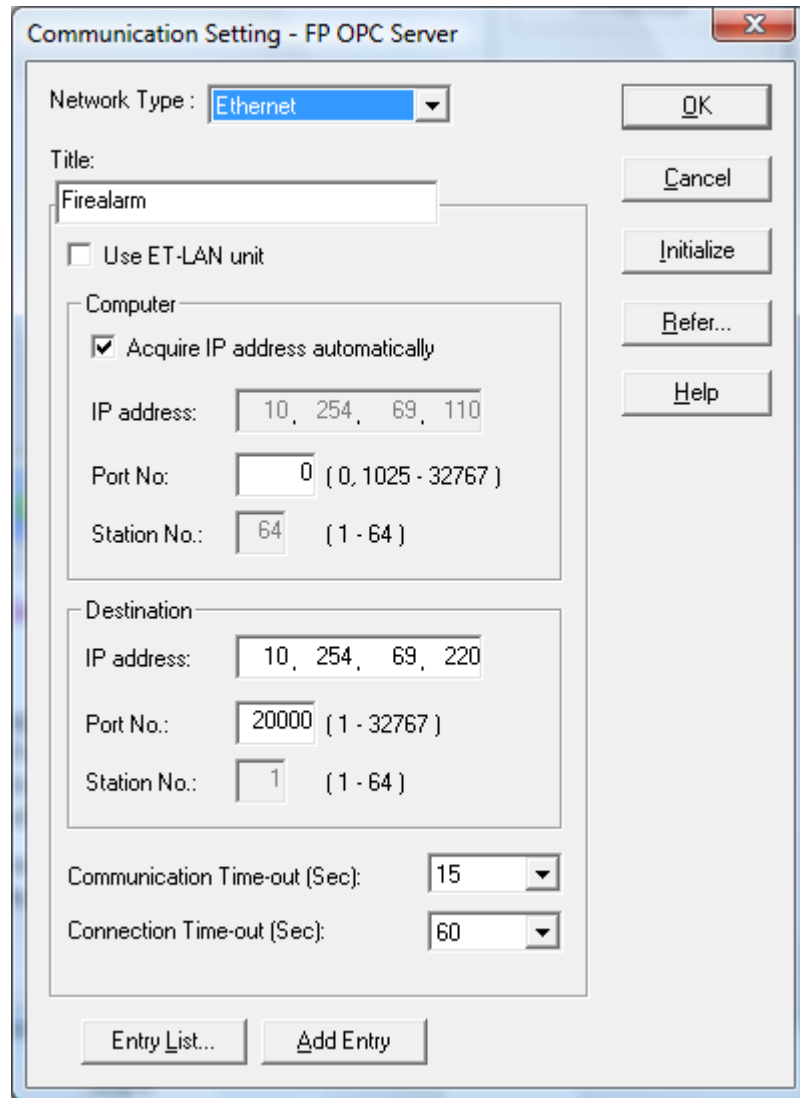




For serial settings one should set network type to ‘C-NET (RS232)’ and then select COM port, baud rate etcetera. Automatic settings are not supported so the three checkboxes in the bottom should be unchecked.



If TCP/IP communication is wanted, one should set network type to 'Ethernet', uncheck 'Use ET-LAN unit', check 'Acquire IP address automatically' and for Computer set 'Port No.' to 0 (zero). For Destination one should enter the ip address of the Web-server II 1598 as well as the same port number that is set in the OPC512 G3 Config Tool (here it is labelled 'Port to listen to: (1-32767)').



## **4**      **Revision history**

---

